

November 22, 2022

Approved Richardson LLR (Low Level Road) Rail Expansion Project – PER No. 21-057

Re: Notification of Construction Activities – December 6, 2022

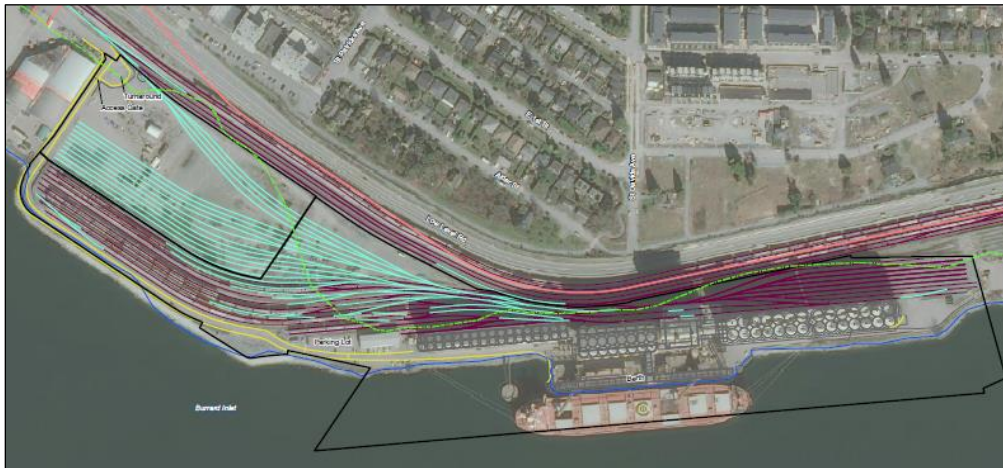
Richardson currently operates an industrial rail yard for the primary purpose of receiving, temporarily storing and unloading grain commodity cars at our facility located at 375 Low Level Road, North Vancouver.

The approved expansion project includes:

- The installation of 15 additional storage tracks;
- Realignment of tracks within the existing yard to facilitate the efficient receiving and storage of full trains – and as a result – fewer partial trains;
- The addition of crossovers and turnouts within the existing yard.

FIGURE: Richardson Rail Yard Expansion Project

Green = new tracking



Construction Activities and Timelines: Monday – Saturday, 7:00am – 8:00pm

Construction is organized into three phases for a combined duration of approximately **40 weeks**. It is currently scheduled to start **December 6, 2022**.

Phase 1 – Utilities Protection and Equipment Preparation: December 2022

- This will include protections to electrical, gas, and water utilities to service equipment installed for the project and within the expanded area of the industrial siding. Phase 1 equipment will enter the site, which includes site trailer, and there will be an increased frequency of truck traffic, as large excavation and remedial equipment will move into the site.

Phase 2 – Rail Bed: December 2022 – February 2023

- This will include the stripping of surficial material and preparation of the rail bed, which is currently situated on a vacant industrial lot.
- Phase 2 equipment will enter the site and trucks will remove excavated materials intended for disposal. This truck traffic includes material being brought on site to build up the rail bed. The estimated maximum number of trucks required is 900 (four trucks/hour) over approximately four weeks.

Phase 3 – New Rail Infrastructure Installation: March 2023 – August 2023

- Involves the installation of 15 new rail tracks next to the existing industrial siding, including track-age, switches, crossings, and other essential siding equipment.
- Phase 1 and Phase 2 equipment will exit the site. New equipment to execute on rail infrastructure activity will enter the site. Material deliveries for Phase 3 of construction may arrive by rail.
- Labour/manpower remains on-site at 300 Low Level Road.

Potential Construction Impacts and Mitigation Measures

Impact	Mitigation
Noise generated during construction will vary with the stage of the project.	Richardson will work within the VFPA standard hours of construction: Monday to Saturday, 7:00am – 8:00pm. Mitigation measures set out in the approved Construction Environmental Management Plan (CEMP) will be implemented. <i>This document may be found on the project website.</i>
An increased frequency of truck traffic. Excavation is anticipated to take between four to six weeks.	Truck movements will be flexible and planned to minimize traffic disruption by avoiding busy times of day and will be restricted to hours in accordance with local and port authority jurisdiction. In addition, a construction phase traffic management plan has been developed.
Additional lighting will be used at the site.	Lighting disruption is minimal as there will be no after-hours construction. Light spill shall be reduced by pointing lights downward, where the direction does not impact safety and placing task lighting as close to the work area as possible.

For more information or general inquiries, please contact Richardson International (permit holder) at vancouverengagement@richardson.ca or visit the project website www.richardson.ca/vancouver-terminal-railyard-expansion.

For questions about the port authority's Project and Environmental Review (PER) of the project, please contact the port authority at PER@portvancouver.com or 604.665.9047.